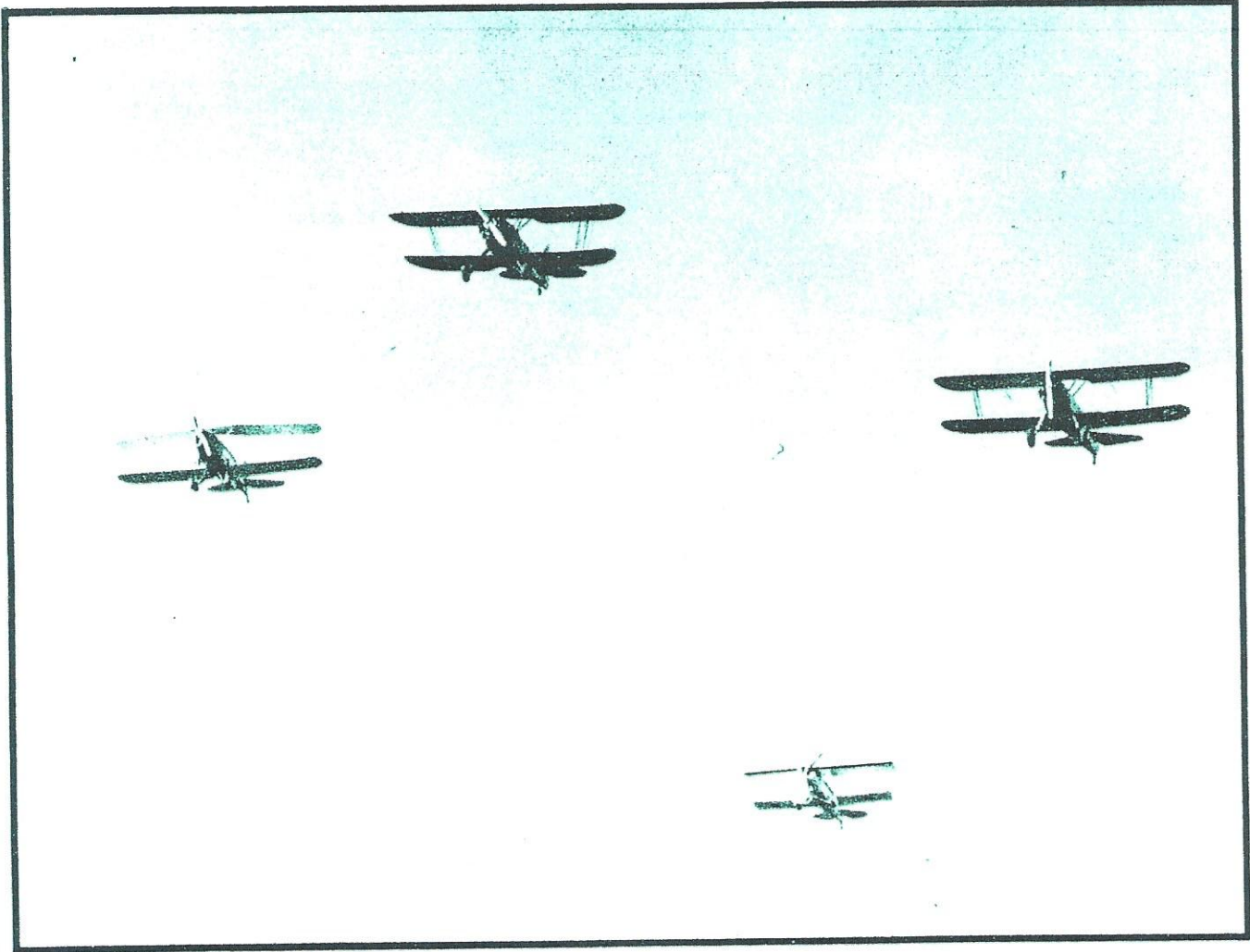


Barb



OTTO HEYER AND SCHELLVILLE

By Bill Ewertz
 (EAA 42278, A/C 7005)
 110 Specht Road
 Sonoma, CA 95476

(Photos by Bob McKenzie)

Schellville: A unique airstrip located 50 miles north of San Francisco, California and dedicated to antique, classic and experimental aircraft. It is home to the Schellville Antique Escadrille which currently has over 100 members. Otto Heyer, 69, our treasurer for many, many years suffered a fatal heart attack while driving home from the field after working on his Cub.

And now . . . The Treasurer's Report . . . Otto . . .

Well . . . the savings account has \$439.23. The checking account has a current balance as of Wednesday of \$247.13 +/- . . . except I just got two tens and a five in cash, a bill for \$9.20 from Jeannie and I haven't figured the savings interest yet. We still have a couple of bills coming in from Jim so the balance is . . . well, I'll figure it later.

Such is the legacy of Otto Heyer. Otto . . . the most entertaining and accurate bookkeeper/treasurer the club has ever had.

18 MAY 1983

Otto . . . who introduced the club to the hazards of Southern Comfort Manhattans.

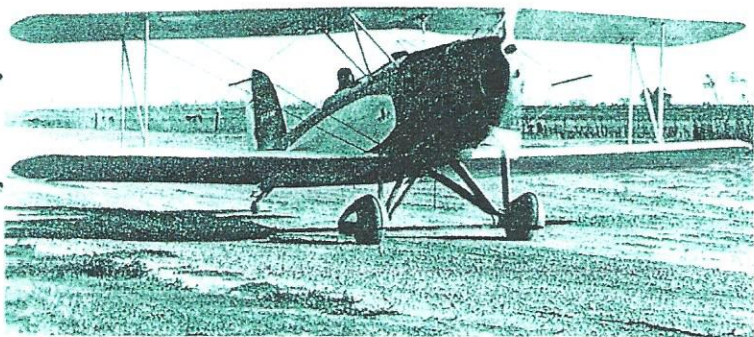
Otto . . . the dedicated antiquer who built a row of rental hangars to house our "goodies".

Otto . . . who traveled to Oshkosh each year taking some of us with him. And to Ardene who enjoyed his hobbies as he did.

To Otto we say goodbye.



Some of the 32 planes awaiting take-off.



Bill Ewertz in his 1929 Great Lakes.

Saturday, November 13 was the only clear day we had after a solid week of rainy misery. The day had to be good because Otto was something special and we just had to do something special to honor him.

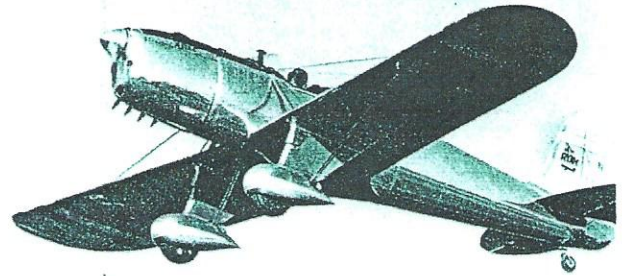
And something special we did! The Schellville Antiquers fielded 32 aircraft to fly a missing man formation. Leading was a three-plane vee of Marquart Chargers (since Otto's Charger was his pet project and his was into the final painting stage). Following the Chargers were groupings of antiques, classics and experimentals in formations of three or more by classifications.

A continuous circuit of planes made three passes over the field with one Charger pulling out and heading west on the second pass. At the completion of the third pass everyone landed and grouped together for Otto's Antique Party. Jim Lynch put our feelings into words with a toast Otto would have been proud of.

Southern Comfort Manhattans were tipped as we began our "attitude adjustment hour". Ardene Heyer provided ample food to round out the menu. Otto's ashes have now permanently joined the Schellville soil over which he flew and we now fly, dogfight and cut paper.

Thanks Otto . . . for just being you!

(L-R): Starduster II, Erik Peterson; Marquart Charger, Jim Smith; Marquart Charger, Ray Galeazzi.

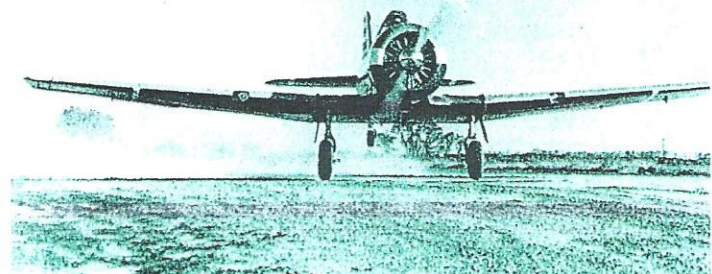


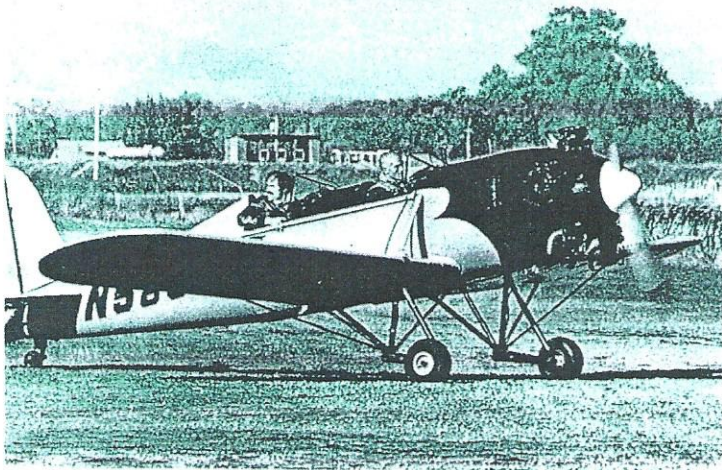
Don Carter's Ryan STA

Following is a listing of planes and pilots in the formation:

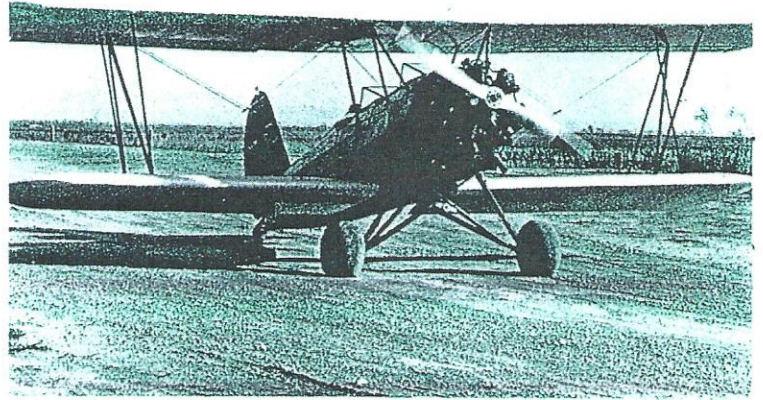
Jim Smith - Marquart Charger
 Ray Galeazzi - Marquart Charger
 Jeannie Williams - Marquart Charger
 Bob Brunner - Acroduster II
 Erik Peterson - Starduster II
 Larry Haywood - Chipmunk
 Dick Terangio - Chipmunk
 Lee Grabill - Ryan PT-22
 Don Carter - Ryan STA
 Leif Ostnes - Fairchild 24W
 Frank Ramos - Fairchild 24R
 Jan Ewertz - Aeronca 7AC
 Roy Harris - Aeronca 7AC
 Mike Davi - Aeronca 7AC
 Ken Copp - Aeronca Chief
 George Dray - 1929 New Standard
 Glenn Lyman - 1931 Travelair 12W
 Jim William - 1929 Fleet
 Bill Ewertz - 1929 Great Lakes
 Arden Valasek - Waco UPF
 Len Grantham - Stearman PT-17

Steve Johnson in his AT-6.





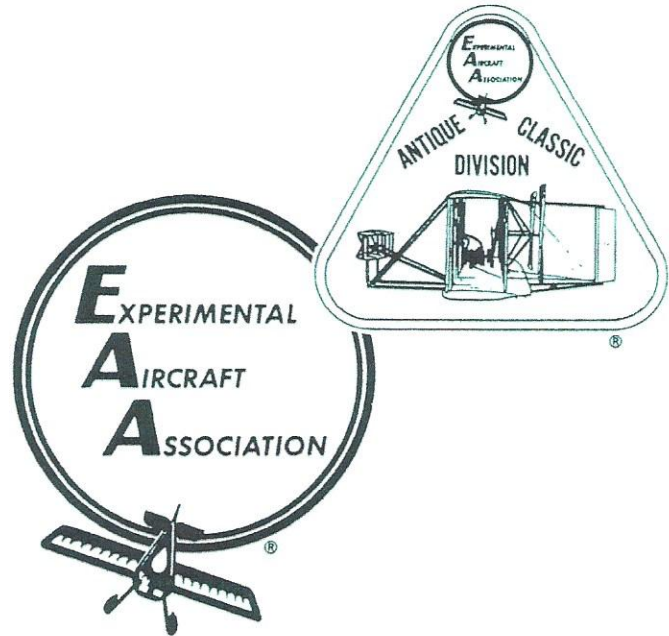
PT-22 and Lee Graybill.



Glenn Lyman's 1931 Travel Air 12W.

- Bill Walker - Stinson 108
- Bill Lawson - Culver Cadet
- Bruce McGlocklin - Piper Clipper
- Steve Johnson - AT-6
- Pete Weibens - Bonanza
- Buzz Moll - J-3
- Lee Schaller - Super Cub
- Ron Metcalf - Super Cub
- Joe Pollyak - J-3
- Al Flint - Cessna 140
- Tom Thacker - EAA Bipe

Otto Heyer (EAA 2213) was an ardent supporter of sport aviation and Schellville Airport will not be the same without him.



Chipmunk - Larry Haywood.



George Dray's 1929 New Standard.

